

# Crisp Point Light Historical Society

P.O. Box 229, Paradise, MI 49768 Phone (906)492-3206

Newsletter #9

May/June 1999

**H**ello Again! We are a little overdue with our newsletter but hope you look forward to hearing from us. Thank you so much for all of your letters and cards. Again, if you have to contact us, would like to climb the tower, or need help and can't find us, try Dee Smith or Bill Apel @ (906)492-3496 or Cathy Harmon @ (906)492-3320.

## New This Summer...

**W**e are taking names from all CPLHS members on a first contact basis. From June 19th through September 1999 we need you to be week-end lighthouse keepers. Your job will be to greet visitors and let them climb the tower and answer questions about what's coming up for Crisp Point. If you or a family member want to work, fine, but not required. Bring wire brushes, safety goggles, and face masks. All the catwalk metal and metal steps and inside railings need scraped and brushed. If you wish to bring plants and flowers etc. try for perennials and water while you're at the lighthouse all weekend. Stakes to let folks know where plantings are would be helpful. Clean up is always needed on the grounds. If you wish to just walk the beach and search for agates, that would be fine too! You and your family can stay in motels close by or tent camp south of the lighthouse about 200 feet in the clearing past the first tree line. This will be for only one family each weekend.

## CPLHS Web Page

[www.geocities.com/Yosemite/Trails/7568](http://www.geocities.com/Yosemite/Trails/7568)

## Grants, Funds, etc...

**N**either one of our Maritime Heritage Grants were approved. With so much talk about saving our lighthouse all the way from Hilary Clinton to Michigan's Slogan, "We'll Leave the Light on for You" we'd hoped that more monies would be forthcoming to help us. We need to be thinking of more funding for erosion. Larger stone needs moved in place around what has already been set in place. we can't be complacent about our erosion problem. Do you know of any grants? Government help? We need your help in this direction badly.

**O**n the bright side - CPLHS is moving ahead with our Coastal Zone Management Grant. Thank you Jeff Ratcliffe for his continued help. The paper work is ongoing. We are taking bids for architectural drawings of the entrance building lost in 1996. Bids are being taken for all the outside and inside painting of the tower. The surveying and archeological paper work is also part of the grant responsibility.

**W**e were disappointed to be notified by letter from the Sault Ste Marie Tribe that they would not be sending any funding. We anticipated \$7,500 this year and next year. We will continue to work with them and hope this will improve in the future.

**M**ark Desotell and the crew from Luce County Road Commission will be hauling small stone/gravel to a point close to CP now. Then they can put it in place without worrying about the road conditions to haul later. They understand that most of our work will be done in July and

August at the lighthouse. All of us thank you in advance for starting and finishing the road!

## This Just In!

**T**he road commission will work on the first 1/4 mile. CPLHS has to come up with the money for hauling and gravel for the last 1/4 mile. HELP! After the 1/4 mile is in shape the Road Commission will take over the 1/4 mile as an extension of Co. Rd. 412 completing the whole 1/2 mile to the lighthouse and Lake Superior.

## People are Great!

**M**ike Warren, member, has done a wonderful job for CPLHS. Mike is a surveyor for Basney & Smith, Inc. Professional Engineers and Surveyors - 33177 Schoolcraft, Livonia, Michigan. Mike has done two needed surveys at Crisp Point. One was a lighthouse property survey at a cost of \$2,635.44. The second was an architectural survey which included location of County Road 412 extenuation at a total cost and expenses of \$2,562.50. The President of Basney & Smith, William L. Roskelly has donated the materials necessary while Mike has done all of this on his own. With Mike on the surveying trips to Crisp Point was surveyor Matt Stahar. What a wonderful gift to Crisp Point. This amount can be used against our matching grant; a total of \$5,197.94.

**T**hanks to Paul Mason of Thermo Fab, Inc. 2081 Enterprise Dr., DePere, WI, we will be installing windows in the lantern room. The windows will be 3/8" plexiglass 34x36". This gift to CPLHS is valued

at \$1,025.00 against our grant. Paul has also said he can help with plexiglass for the tower windows. This donation will be made this summer in the memory of Paul's mother, Mary Mason.

Thank you to Chuck Ross, member of CPLHS. Chuck made a tamper free donation pole and it has been cemented to the ground next to our log book stand.

Thank you so much to Jennie McCain and Miriam Conner for all of their help on the computer to bring these newsletters from my scribbles to finished work!

Thank you to Dee Smith, Cathy Harmon, and Stella Shisler for helping with mailing out almost 1,000 newsletters. I'm thanking them in advance because I know they'll help me!!

CPLHS will be working with JoAnn Warren, Ray Singleton's daughter for future pictures and stories to share with all of you. Thank you JoAnn.

## FYI

The proper name for the lighthouse is Crisp Point not Crisp's Point. In (1876) the lighthouse station number 10 became known as Crisp's Lifesaving Station. It was named after the first keeper of the station, Christopher Crisp. The lighthouse (1904) has always been Crisp Point Lighthouse.

Long ago we decided not to publish donations with individuals names and locations like we do the membership page. We thought it might lead to our members and friends being put on other mailings or being asked for

funds. CPLHS appreciates every donation and membership, every T-Shirt order, etc.

We are now mailing out over 1,000 copies of our newsletter!

Crisp Point Lighthouse belongs to all of you. It is a public place. The transfer from the Coast Guard to National Park Services to Luce County happened in 1997. The Historical Society has a 40 year renewal lease to operate, maintain, and restore it. No private property is involved.

## What We Need

- ~ Ground cover - beach grasses, wild roses, lilacs, panes, willows, flower bulbs, set.
- ~ Scraping and painting of all metal surfaces - this summer
- ~ Window repairs
- ~ Copper ground bar for the tower. The original was stolen a long time ago.
- ~ Bids on painting the outside of the tower.
- ~ Architectural drawing of the entrance building so that it can be replaced next year.
- ~ A restroom.
- ~ A Well

## Good News!

We've just heard that the Flame Keepers of Tennessee have decided to take on CPLH this year using their resources to help save the lighthouse!

We have paid off our \$42,000 debt to John Lechner for stone and hauling in full!  
\$7,500 Sault Ste Marie Tribe of the Chippewa  
\$7,300 Bay Mills Indian Community  
\$16,000 Spencer Murphy, Jr.

\$11,200 Raised by donations to CPLHS from all of you!

## Mark Your Calendar

**June 26 & 27** - Michigan Magazine Expo located on M 33, Midway between Fairview and Comins, Michigan. CPLHS will be selling merchandise at space # 22 on the Michigan Magazine Museum property.

**July 17** - 3rd Annual Crisp Point Lighthouse Conference. All are welcome. A form to fill out inside this newsletter will make it easier for us to know how to plan. We are hoping to have a larger crowd by moving this conference to July instead of the end of August.

**July 23&24** - Lake Superior GLLKA Conference. We'll be there. Hope many of you have signed up!

**August 20,21,22** - Blueberry Festival in Paradise, MI. Kay Du Bois will be there again selling original artwork and furniture depicting CPL. Our tees, sweats, caps, etc.. will be on sale.

**October 9th & 10th** - Great Lakes Lighthouse Festival in Alpena, MI. Dee Smith and I will be representing CPL.

## Sympathy

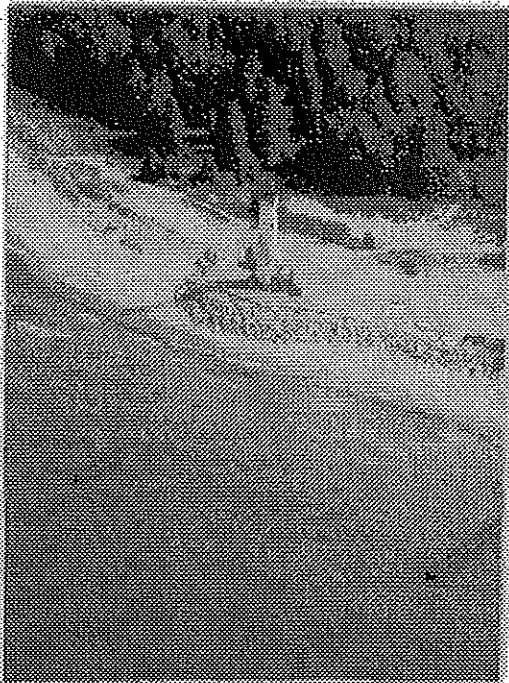
Our condolences to the family of Reta Gustafson, Newberry, MI. Reta was a good friend of Crisp Point Light Historical Society.



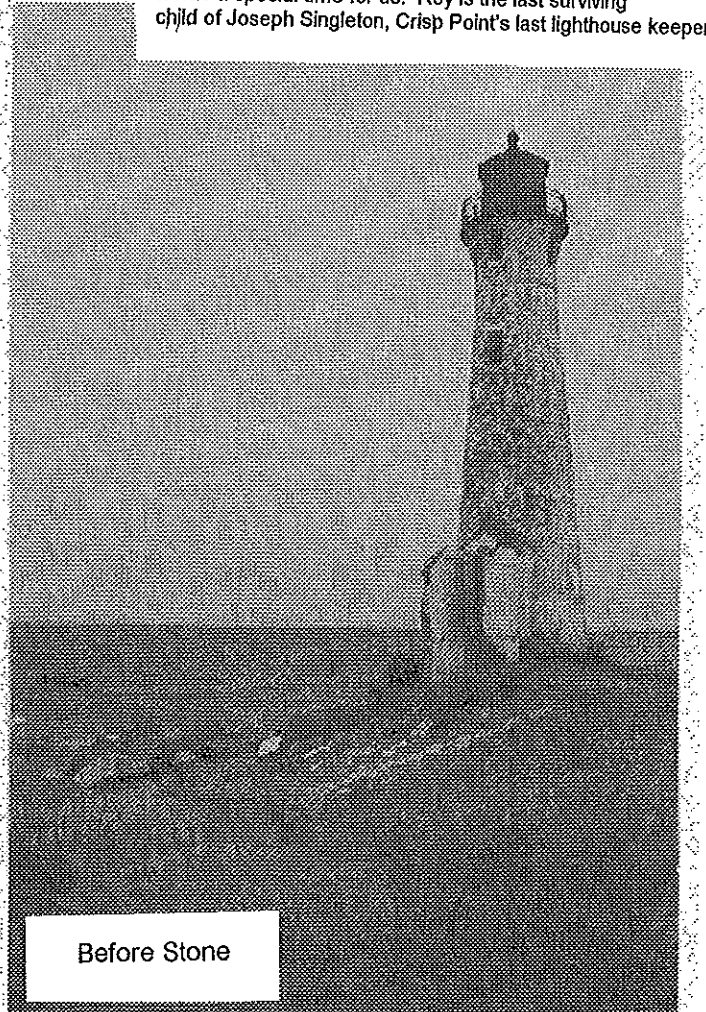
Famed water color artist, Frances Platske has done several beautiful paintings of Crisp Point.



Don and I visited Roy Singleton in Florida this winter. It was a special time for us. Roy is the last surviving child of Joseph Singleton, Crisp Point's last lighthouse keeper.



After Stone



Before Stone

Crisp Point Light Historical Society  
P.O. Box 229, Paradise, Michigan 49768 Phone 906 492-3206



TELL US IN WHAT WAYS YOU'D LIKE TO HELP OR BE INVOLVED AT CRISP POINT.

Check the areas in which you would like to be involved:

- heavy equipment
- CPA or lawyer
- answer some Crisp Point mail
- grant writing
- government influence "friends in high places"
- carpentry
- masonry
- well drilling
- planting
- labor of any kind
- Yes, I'd be interested in an annual summer conference - "large working picnic"
- Yes, I will be coming to Crisp Point in 1999. I plan to be there in \_\_\_\_\_

